

Standard

1.1	Brand	MIMA	
1.2	Model	MQC45	
1.3	Power type	Battery	
1.4	Operation type	Seated	
1.5	Rated capacity	Q (kg)	4500
1.6	Load center	c (mm)	600
1.7	Front overhand	x (mm)	330
1.8	Wheelbase	y (mm)	1800

Weight

2.1	Service weight (with battery)	kg	7650
2.2	Axle load at full load, drive side/load side	kg	6620/5630
2.3	Axle load with no load, drive side/load side	kg	5820/1930

Wheel

3.1	Wheel type	Solid rubber tyre	
3.2	Load wheel size	15×5-11.25/φ381×127	
3.3	Driving wheel size	18×9-12.125/φ457×229	
3.4	Wheel number Front/Back(X=driven)	4/2X	
3.5	Wheel tread,drive	b10 (mm)	2050
3.6	Wheel tread,load	b11 (mm)	1964

Size

4.1	Mast/Fork tilt range,Front/Rear	$\alpha/\beta(^{\circ})$	2/4
4.2	Overhead guard height	h6(mm)	2550
4.3	Seat height	h7 (mm)	1375
4.4	Leg height	h8 (mm)	500
4.5	Overall length	l1 (mm)	2300
4.6	Length from tail to fork face	l2 (mm)	1100
4.7	Overall width	b1/b2 (mm)	2439/2745
4.8	Fork size	s / e / l (mm)	50/150/1200
4.9	Fork outside width	b5 (mm)	600~2900
4.10	Inner leg width	b4 (mm)	1340
4.11	Ground clearance, at the center of the wheelbase	m2 (mm)	150
4.12	Aisle width when running sideways 1000×6000mm cargo c=500mm	Ast (mm)	2900
4.13	Body to support leg length	l7 (mm)	2300

Function

5.1	Side Driving speed, full/unladen	km/h	7-8
5.2	Straight Driving speed, full/unloaded	km/h	6-7
5.3	Climbing ability load/unload	%	8/8
5.4	Brake type		Electromagnetic

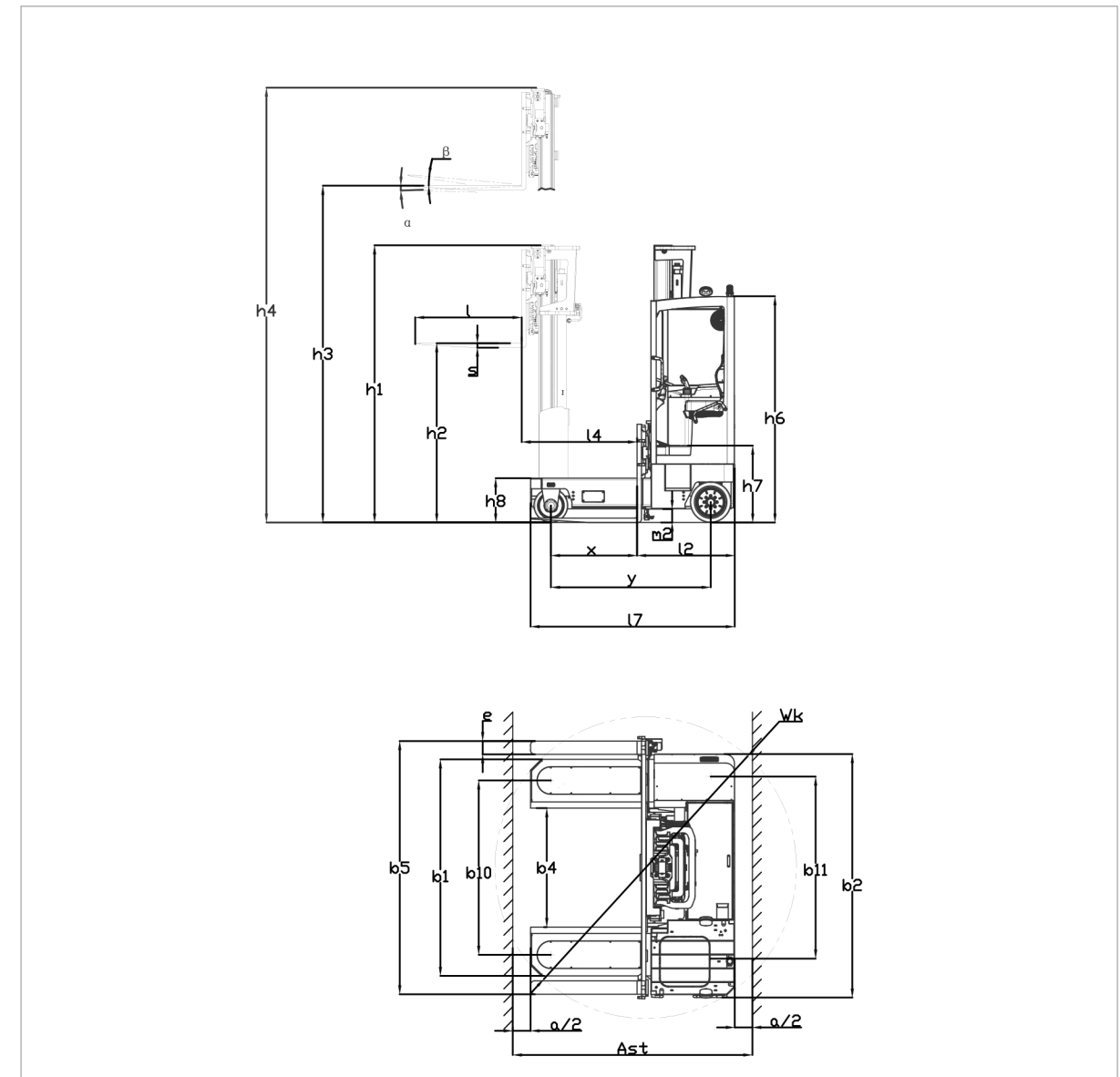
Drive

6.1	Drive motor power (S2-60min)	kw	2×7
6.2	Lift motor power (S3-15%)	kw	21
6.3	Lead acid battery, voltage/capacity	V/Ah	80/500

Other

7.1	Drive control type		AC
7.2	Driver's ear noise level	dB(A)	75

2D View



Load Chart

