

Standard

1.1	Brand		MIMA
1.2	Model		MQC35
1.3	Nameplate		MQC
1.4	Power type		Battery
1.5	Operation type		Seated
1.6	Rated capacity	Q (kg)	3500
1.7	Load center	c (mm)	600
1.8	Front overhand	x (mm)	325
1.9	Wheelbase	y (mm)	1800

Weight

2.1	Service weight (with battery)	kg	6370①
-----	-------------------------------	----	-------

Wheel

3.1	Wheel type		Solid rubber tyre
3.2	Load wheel size		14×5/φ356×127
3.3	Driving wheel size		16×7/φ406×178
3.4	Wheel number Front/Back(X=driven)		4/2X
3.5	Wheel tread,load	b11 (mm)	1712
3.6	Wheel tread,drive	b10 (mm)	1760

Size

4.1	Mast/Fork tilt range,Front/Rear	$\alpha/\beta(^{\circ})$	2/4
4.2	Height of mast closed	h1(mm)	3043
4.3	Free lifting height	h2(mm)	1958
4.4	Lifting height	h3(mm)	6000
4.5	Mast extended height	h4(mm)	7135
4.6	Cab overall height (with/without light)	h6(mm)	2674/2574
4.7	Seat height	h7(mm)	1365
4.8	Leg height	h8(mm)	475
4.9	Overall length	l1 (mm)	2300
4.10	Overall width	b1/b2 (mm)	2435/2860
4.11	Fork size	s/ e/ l (mm)	50/150/1200
4.12	Fork outside width	b5 (mm)	610~2800
4.13	Inner leg width	b4 (mm)	1150
4.14	Reach stroke	l4 (mm)	1300
4.15	Ground clearance, at the center of the wheelbase	m1 (mm)	124

Function

5.1	Driving speed when going straight, (load/unload)	km/h	7~8
5.2	Driving speed when driving sideways, (load/unload)	km/h	6~7
5.3	Lifting speed (load/unload)	mm/s	150/250
5.4	lowering speed (load/unload)	mm/s	195/160
5.5	Brake type		Electromagnetic

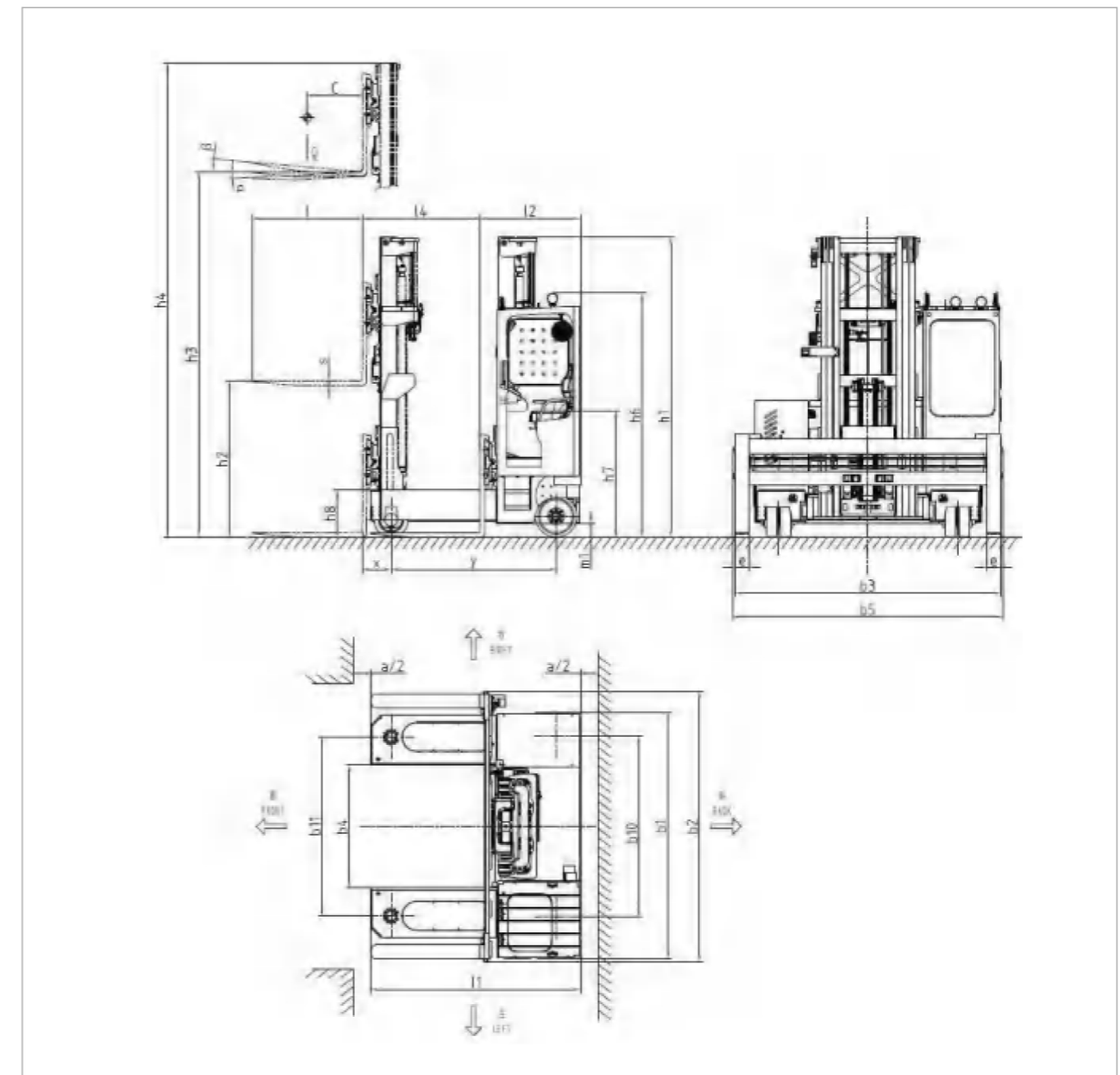
Drive

6.1	Drive motor power (S2-60min)	kw	8AC
6.2	Lift motor power (S3-15%)	kw	15AC
6.3	Lead acid battery, voltage/capacity	V/Ah	48/560
6.4	Battery weight	kg	910

Other

7.1	Battery change type		Hoist
-----	---------------------	--	-------

2D View



Load Chart

